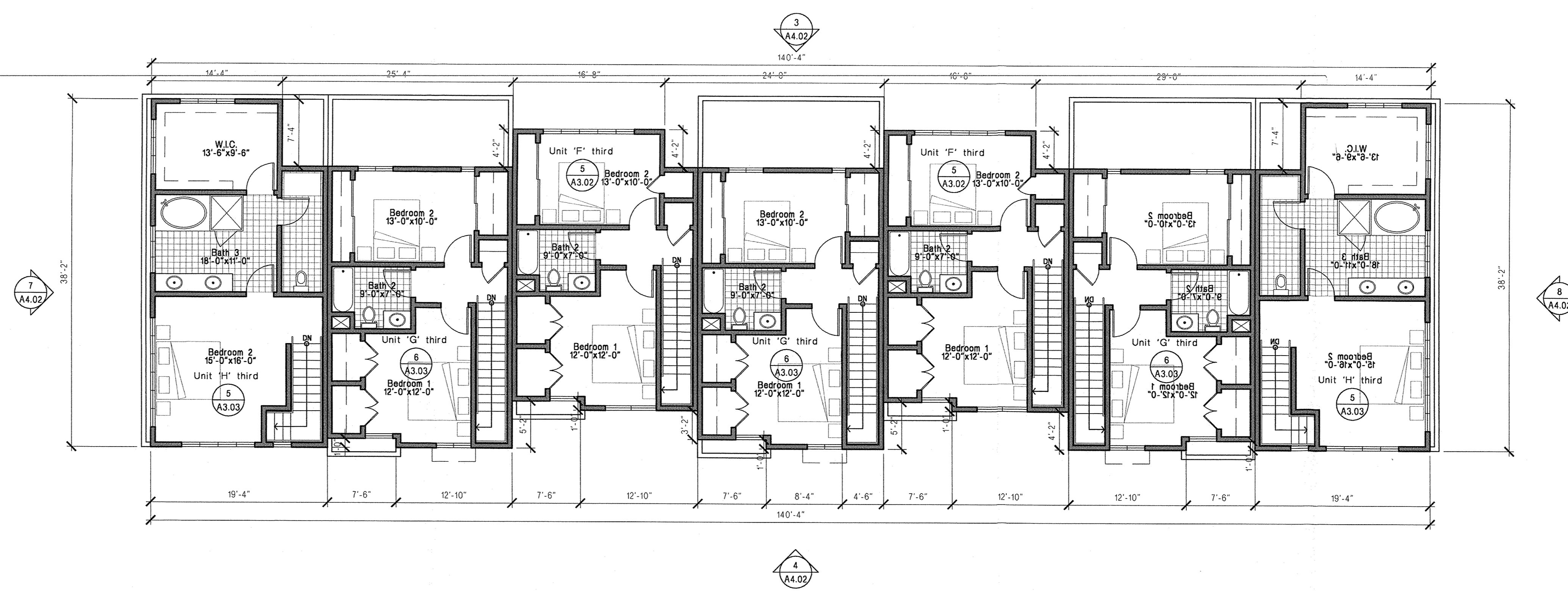
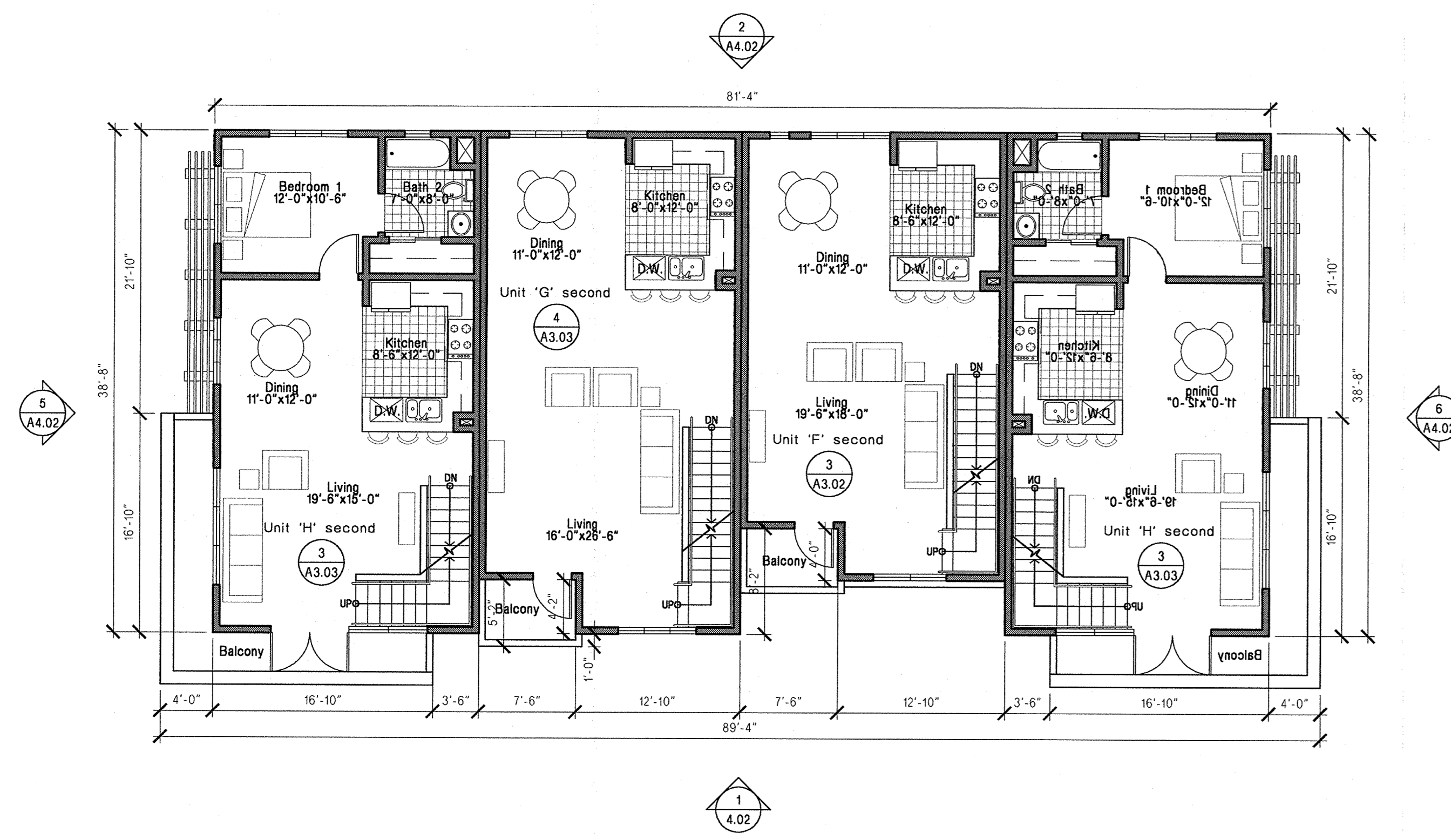


6 Building 'A3.2' Third Floor Plan
scale: 1/8" = 1'-0"

Building 'A3.3' Sim.

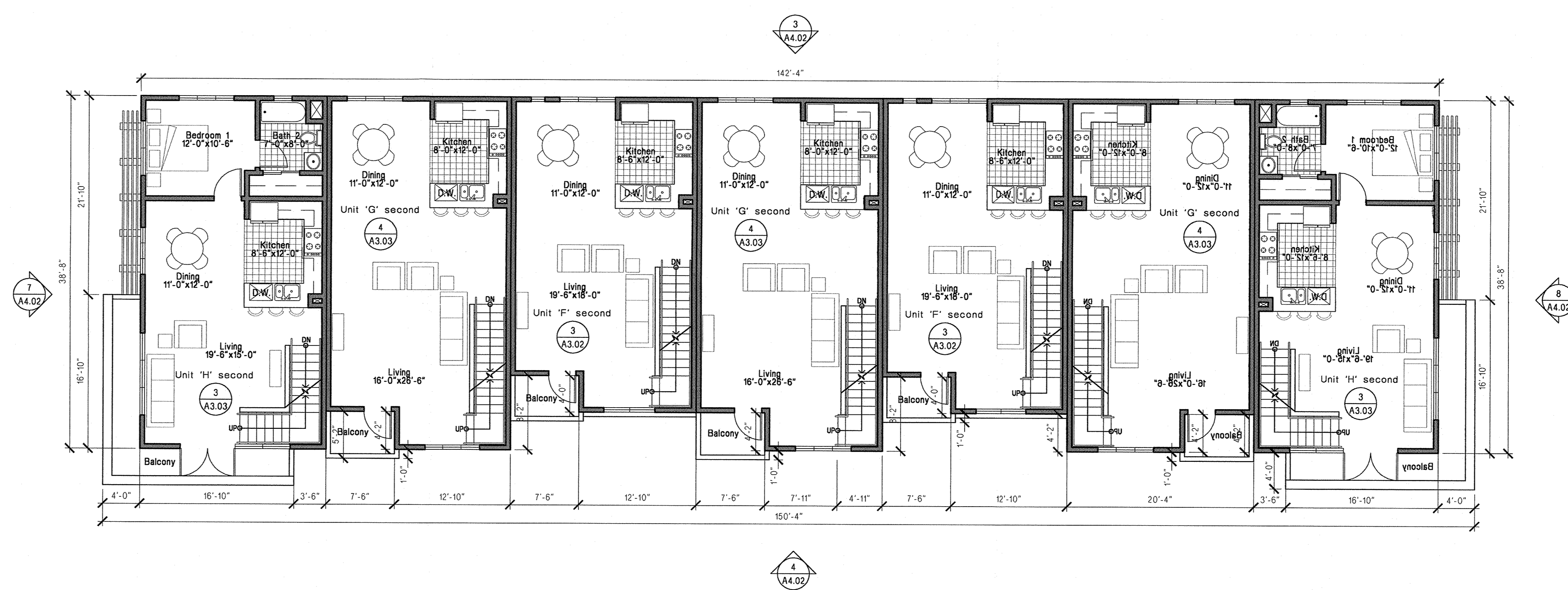


3 Building 'A3.1' Third Floor Plan
scale: 1/8" = 1'-0"

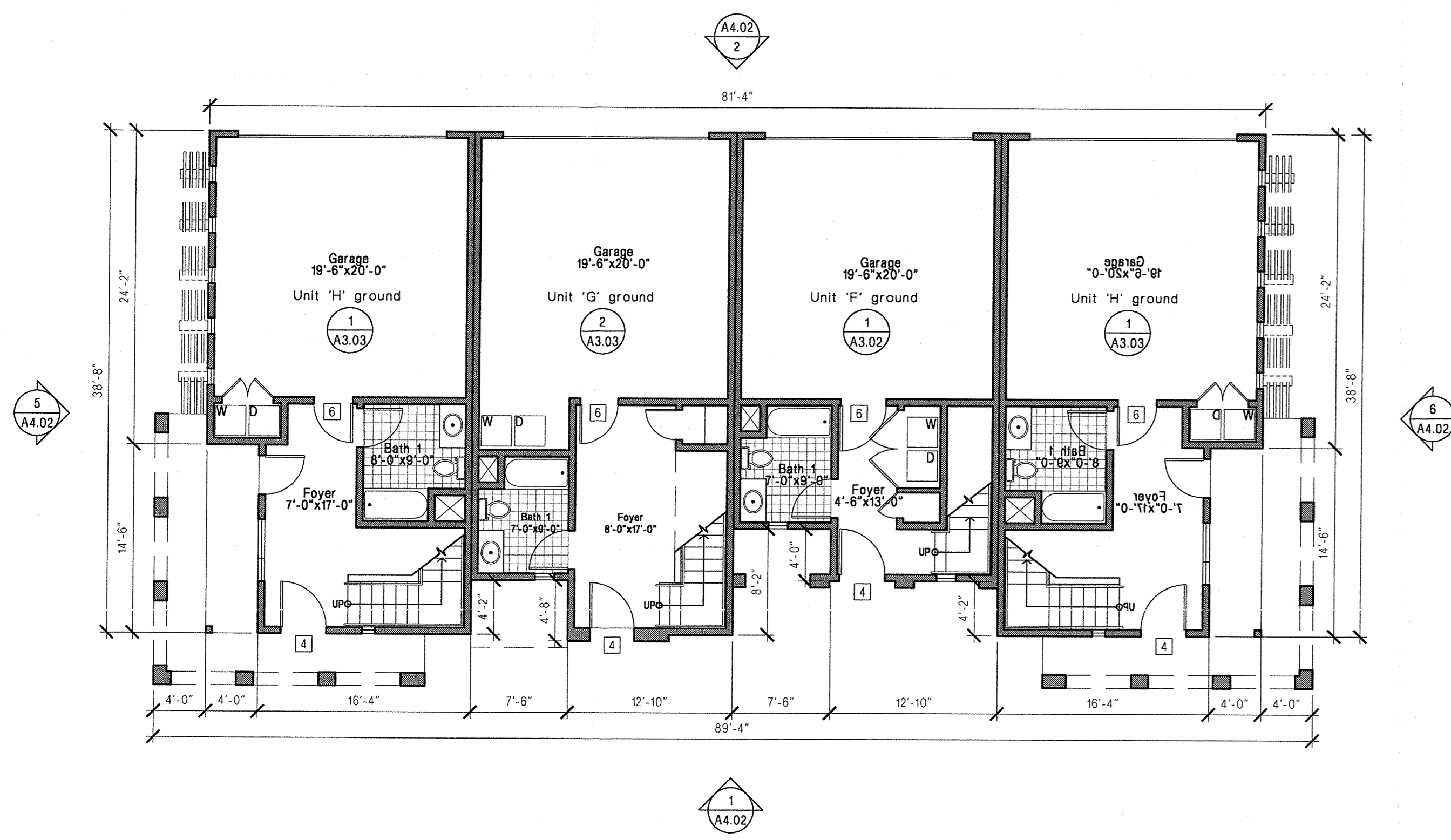


5 Building 'A3.2' Second Floor Plan
scale: 1/8" = 1'-0"

Building 'A3.3' Sim.

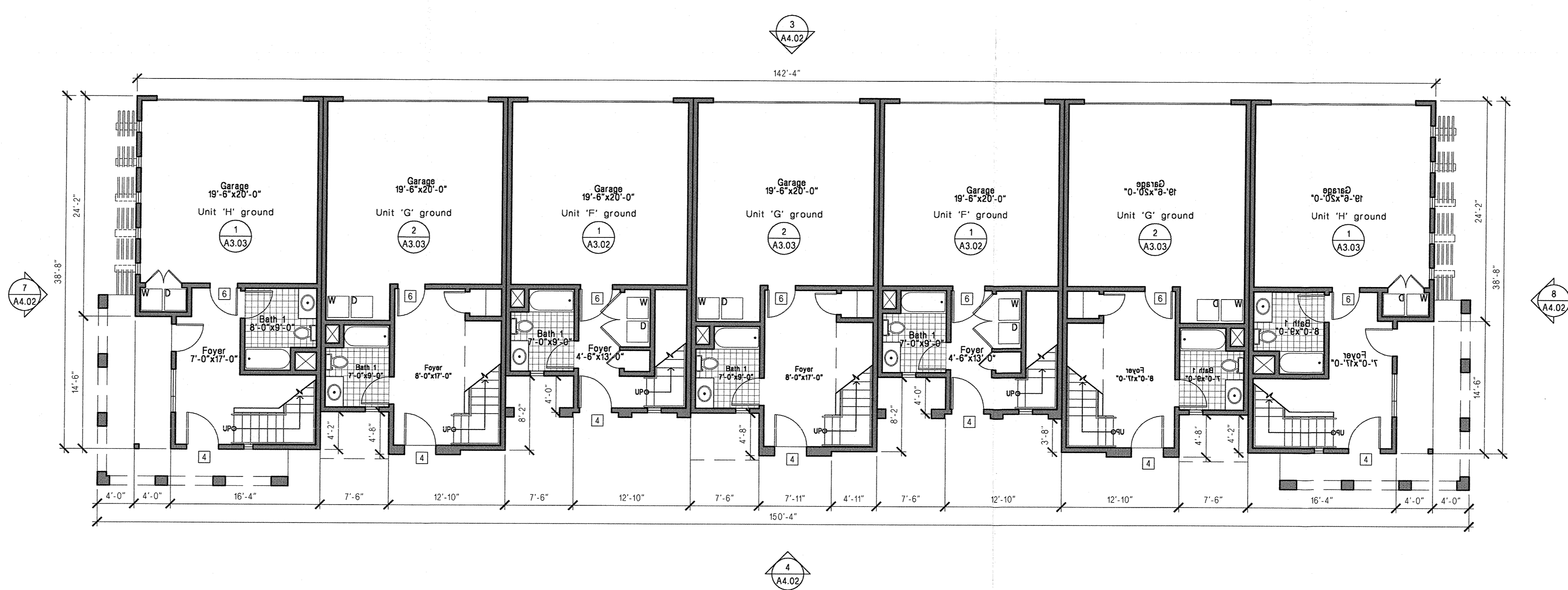


2 Building 'A3.1' Second Floor Plan
scale: 1/8" = 1'-0"



4 Building 'A3.2' First Floor Plan
scale: 1/8" = 1'-0"

Building 'A3.3' Sim.



1 Building 'A3.1' First Floor Plan
scale: 1/8" = 1'-0"

Building Plan Notes

- 1 Exit stair shaft
- 2 Trash/Recycling Enclosure
- 3 Exit corridor
- 4 Unit Entry
- 5 Building Entry/Exit
- 6 Garage Access
- 7 Elevator
- 8 Exterior Corridor
- 9 Storage Unit
- 10 Bike Shower Location TBD

**AFFORDABLE HOUSING
EXPEDITE PROGRAM**

AUTHORIZED BY
COUNCIL POLICY 600-27

M.W. STEELE
GROUP, INC.
ARCHITECTURE | URBAN DESIGN
325 FIFTEENTH STREET
SAN DIEGO, CA 92101
TELEPHONE: 619.230.0325
FACSIMILE: 619.230.0335
WEBSITE: www.mwsteele.com

Site Development Permit
Vesting Tentative Map
Affordable Housing Expedite Program
Re-Zone

Project Number: 0470
Original Date: September 01, 2005
Drawn: zja
Checked:

Revision 1: 02.17.06 Initial Submittal
Revision 2: 08.11.06 second submittal
Revision 3: 08.09.07 third submittal
Revision 4: 08.17.07 fourth submittal
Revision 5:
Revision 6:
Revision 7:
Revision 8:
Revision 9:
Revision 10:
Revision 11:
Revision 12:

Ocean View Village

Legal Description:

The Southeast Quarter of the Southwest Quarter of the Northeast Quarter of Section 29, Township 18 South Range 1 West, San Bernardino meridian, in the County of San Diego, State of California, according to official plat thereof.

Assessor's Parcel Number:

645-050 APPROVED EXHIBIT "A"

PROJECT NO. **PTS# 96580**
APPROVAL NO(s). **SDP# 326732**
VTM# **3/19/07 + A62046 + 2/14/06**
APPROVED BY: HEARING OFFICER, PLANNING COMMISSION, CITY COUNCIL ON **2/11/08**
SIGNATURE *Steve M...ch*

NOT FOR CONSTRUCTION
Building 'A3.1' & 'A3.2'
1st Floor Plan
2nd Floor Plan
3rd Floor Plan

A2.03