

# FOR LEASE BURKE SYCAMORE BUSINESS CENTER

2312 LA MIRADA DRIVE - VISTA, CA 92081



[BACK TO NEW LISTINGS](#)



## LISTING DATA

5,292 SF building

922 SF of office build-out

2.3/1,000 parking

18' minimum clear height

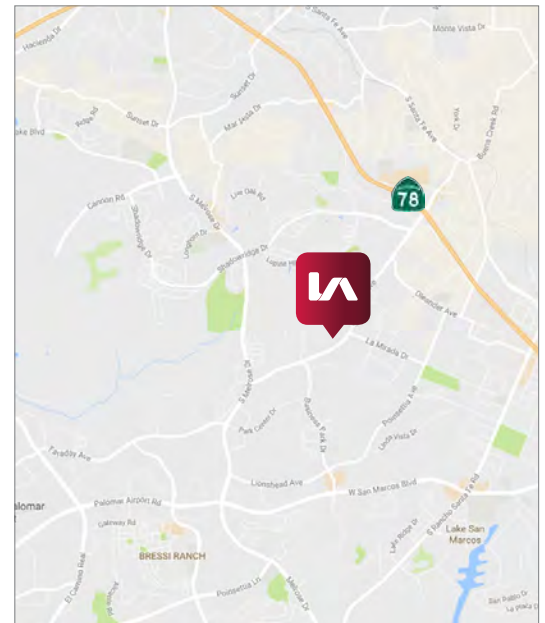
2 oversized grade level doors

Fire sprinklered

Ideal location to access HWY 78, I-5 & I-15

Available with 30 day notice

**LEASE RATE: \$0.95 plus utilities**



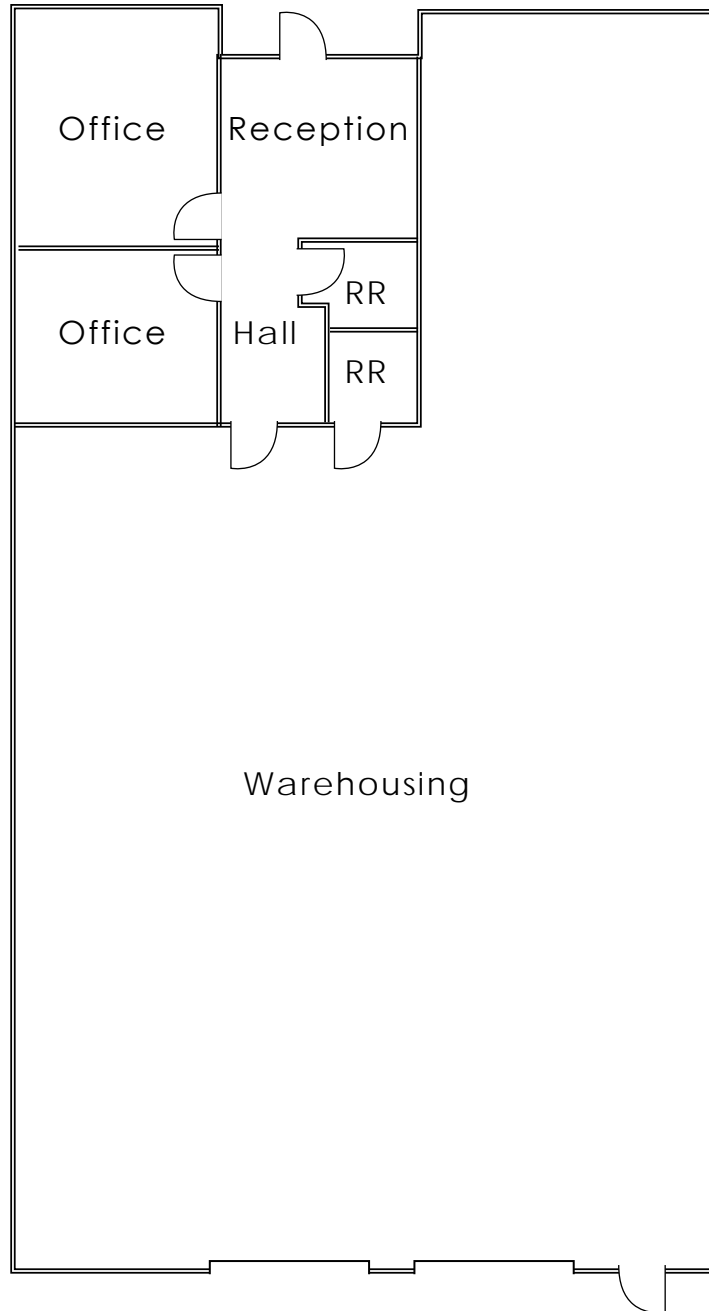
**Rusty Williams, SIOR**  
rwilliams@lee-associates.com  
D 760.448.2453  
CalBRE Lic #01390702

**Chris Roth**  
croth@lee-associates.com  
D 760.448.2448  
CalBRE Lic#01789067

All information furnished regarding property for sale, rental or financing is from sources deemed reliable, but no warranty or representation is made to the accuracy thereof and same is submitted to errors, omissions, change of price, rental or other conditions prior to sale, lease or financing or withdrawal without notice. No liability of any kind is to be imposed on the broker herein.

**FOR LEASE**  
**BURKE SYCAMORE BUSINESS CENTER**

2312 LA MIRADA DRIVE - VISTA, CA 92081



**Rusty Williams, SIOR**  
rwilliams@lee-associates.com  
D 760.448.2453  
CalBRE Lic #01390702

**Chris Roth**  
croth@lee-associates.com  
D 760.448.2448  
CalBRE Lic#01789067

All information furnished regarding property for sale, rental or financing is from sources deemed reliable, but no warranty or representation is made to the accuracy thereof and same is submitted to errors, omissions, change of price, rental or other conditions prior to sale, lease or financing or withdrawal without notice. No liability of any kind is to be imposed on the broker herein.

# FOR LEASE BURKE SYCAMORE BUSINESS CENTER

2312 LA MIRADA DRIVE - VISTA, CA 92081

