

# FOR LEASE

## 3421 Hancock St - San Diego, CA 92101

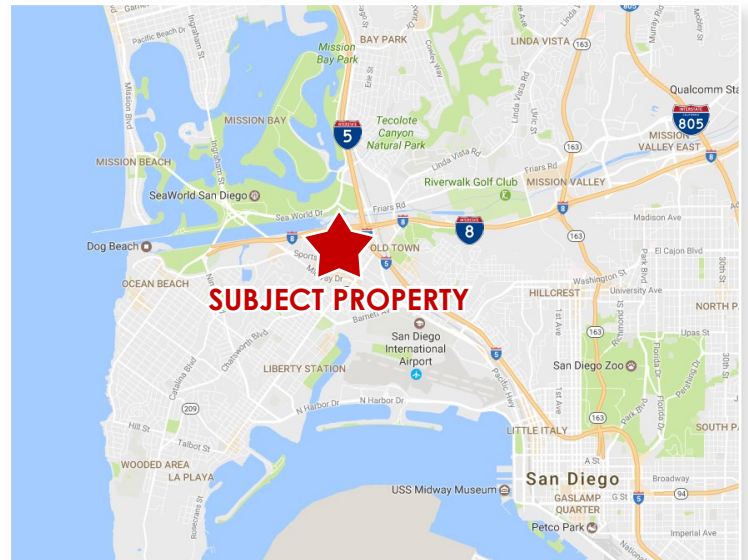
◀ BACK TO NEW LISTINGS



### SPORTS ARENA DISTRICT FLEX/OFFICE SPACE AVAILABLE

#### Property Features

- ± 4,000 SF commercial industrial building
- Central location behind the Sports Arena
- Second story flex/office space
- Large open rooms
- Single restroom
- Suite access front and rear
- Secured yard with wide alley access
- **Lease Rate: \$1.25 PSF**

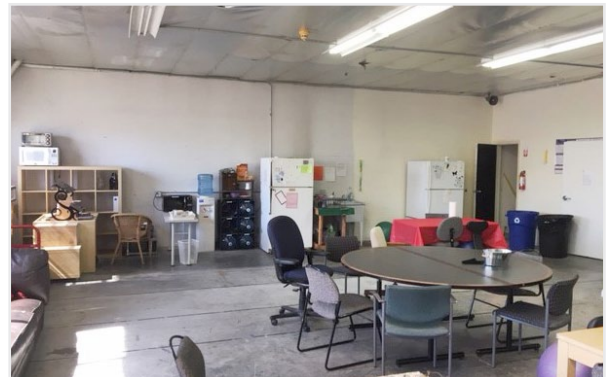
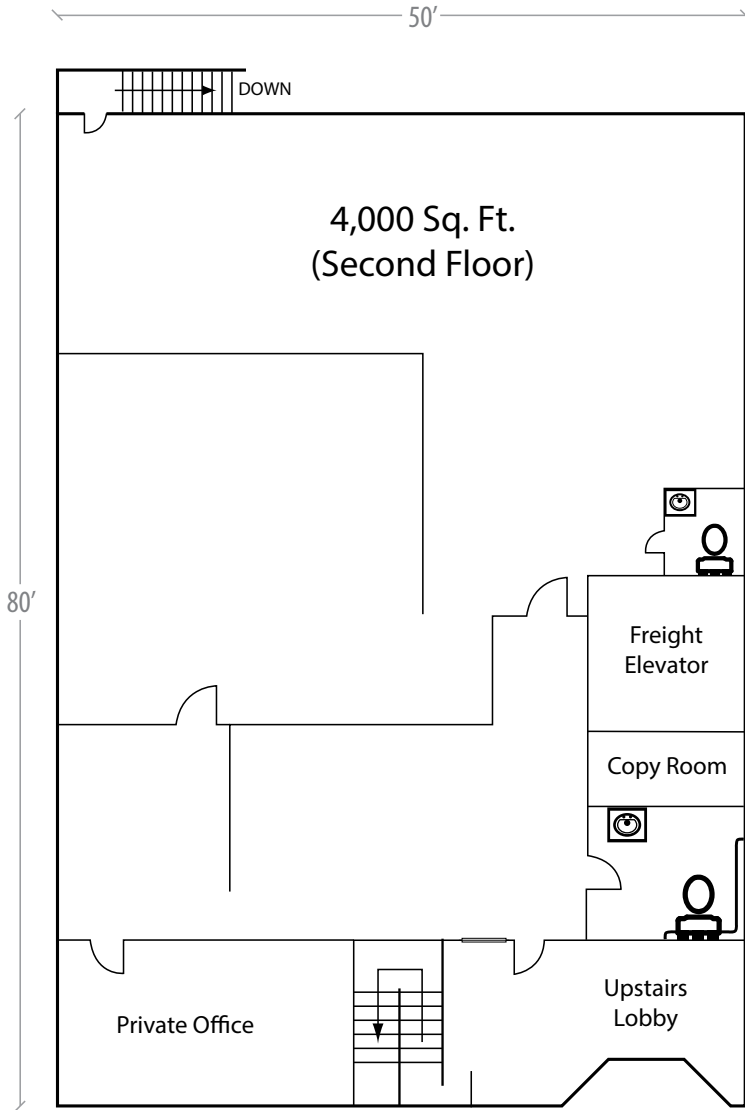


**Alex Weiss**  
(760) 448-2452  
aweiss@lee-associates.com  
CalBRE #01893865

Lee & Associates Commercial Real Estate Services - 1900 Wright Place Ste 200 - Carlsbad, CA 92008

No warranty or representation is made to the accuracy of the foregoing information. Terms of sale or lease and availability are subject to change or withdrawal without notice.

## FLOORPLAN





**FOR LEASE**

3421 Hancock St - San Diego, CA 92101



Lee & Associates Commercial Real Estate Services - 1900 Wright Place Ste 200 - Carlsbad, CA 92008

No warranty or representation is made to the accuracy of the foregoing information. Terms of sale or lease and availability are subject to change or withdrawal without notice.