

Commercial Real Estate NEWS

APRIL 2020

**STAY HOME
SAVE LIVES**



Featured Image: 2,405 SF Industrial Condo In Oceanside.
Picture courtesy of The Williams Roth Group of Lee & Associates, Inc. NSDC.

[View Featured Property Brochure](#)

LEE NSDC NEWS

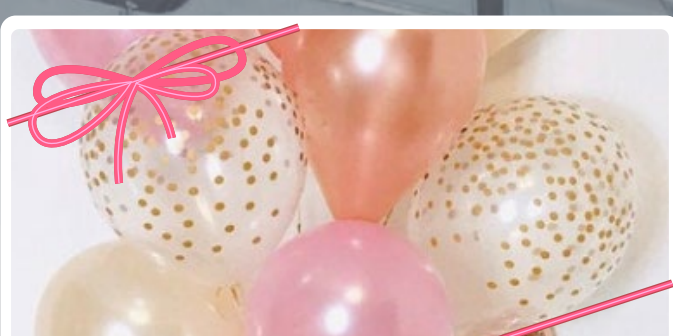
BEST OF THE BEST

Lee & Associates Congratulates Our 2019...

[View Our Top Producers & Award Winners!](#)

Lee & Associates, Inc. - NSDC
Congratulates our 2019 Top Producers and Award Winners!

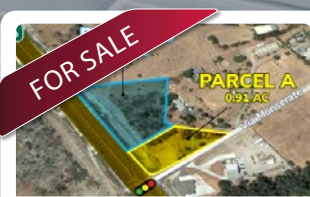
ANNOUNCEMENT



Lee & Associates, Inc. - NSDC congratulates the Aquilina family who is expecting a baby GIRL this summer! *Congratulations!*

FEATURED LISTINGS

>Click< on property below to view the property brochure.



- 2.56 Combined Acres
- C36 Zoning
- Retail Drive Thru & Senior Care Potential
- Max. Height of 2 Stories

3010 & 3080 Pala Road, Fallbrook



- +/- 3,528 SF Retail Space Available
- 13,504 SF Lot Size
- Zoning: C-1/ Community Commercial

1941 North Tustin Avenue, Santa Ana



- Three Industrial Buildings
- 6,000 - 82,332 SF
- 1,600 Amps, 277/480V

Los Vallecitos Blvd & Newport Dr, San Marcos

ALL LEE CRE LISTINGS



[View All Listings](#)

Browse through our up-to-date data base to view all available listings for sale and lease throughout San Diego County and Beyond.

[SUBSCRIBE HERE](#)

We're Hiring!
[Click for information](#)

At Lee & Associates North San Diego County, we are dedicated to providing our customers with unparalleled representation by providing real estate solutions with accuracy and efficiency. We appreciate your business and invite you to contact us with any questions you might have regarding commercial properties in North San Diego County.

LEE CRE NEWS | FEATURED ARTICLE

What The Decline of Brick-and-Mortar Sales Could Mean For San Diego Malls

April 7, 2020 | James Bengala , Lee & Associates, Inc. - NSDC



CRE NEWS HIGHLIGHTS | APRIL 2020

Senate Passes \$2 Trillion Stimulus Bill That Includes Relief For Retail, Hotels, Multifamily

-Bisnow



Storied Hotel Del Coronado Getting \$200M Makeover



Bisnow