

AVAILABLE BRIDGE POINT ITASCA

1055 W. DEVON AVENUE (BUILDING #2)

AVAILABLE: 166,327 SF

DIVISIBLE: 50,000 SF

OFFICE: To suit

WAREHOUSE OFFICE: 939 SF

SITE SIZE: 12.39 acres

CLEAR HEIGHT: 32'

COLUMNS: 56' x 50' typical
(with 60' speed bay)

LOADING:

- 22 exterior 9' x 10' docks with 35,000 lb levelers (expandable to 33 docks)
- 1 drive-in door

CAR PARKING: 156 cars

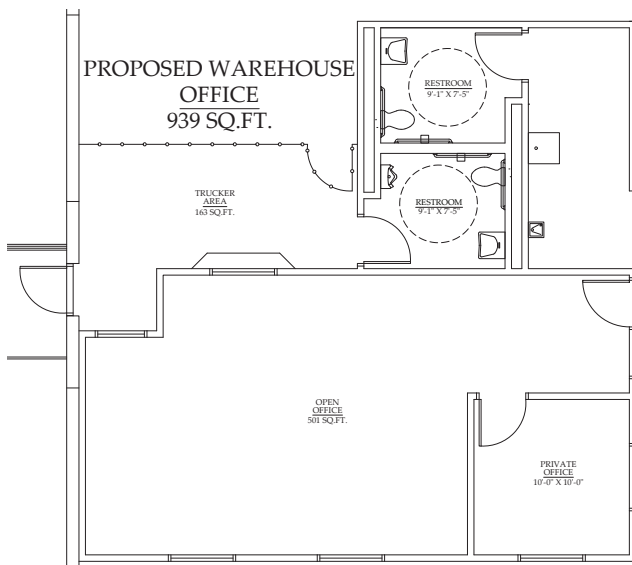
BUILDING DEPTH: 310'

TRUCK COURT: 200' shared

POWER: 3,000 amps @ 480 volts

LIGHTING: LED with motion sensors

SPRINKLER: ESFR system



IMMEDIATE OCCUPANCY

