

±8,094 RSF FOR LEASE
FREESTANDING OFFICE/LAB BUILDING



1820 E. DEERE
SANTA ANA, CA

PROPERTY SUMMARY

This state-of-the-art Office/Lab Building is in the heart Orange County in the city of Santa Ana, California. The property has direct freeway access to Newport-(55), San Diego (405) freeways and the Interstate (5) as well as John Wayne airport. The business park delivers "Class A" creative office, R&D, Lab space with an abundance of parking.

For more information, please contact:



TIM WALKER
office: 949.724.4741
timwalker@lee-associates.com
DRE #: 01218076



HAYDEN TOLAND
cell: 310.903.7821
htoland@lee-associates.com
DRE #: 02215762



MILES TOLAND
cell: 310.903.7806
Mtoland@lee-associates.com
DRE #: 02216740

Visit

www.1820deere.com

LEE & ASSOCIATES
COMMERCIAL REAL ESTATE SERVICES
NEWPORT BEACH

The information contained herein has been obtained from the property owner or other third party and is provided to you without verification as to accuracy. We (Lee & Associates, its brokers, employees, agents, principals, officers, directors and affiliates) make no warranty or representation regarding the information, property, or transaction. You and your attorneys, advisors and consultants should conduct your own investigation of the property and transaction.

±8,094 RSF FOR LEASE

FREESTANDING OFFICE/LAB BUILDING

PROPERTY FEATURES



- » ±8,094 Sq. Ft. Freestanding Office/Building Lab
- » Direct access to John Wayne Airport
- » Direct Access to Newport (55) and San Diego (405) Freeways, Exposure to MacArthur Boulevard
- » Ample Parking
- » R&D/Lab, Creative Office, Showroom / Retail Commercial Uses

**1820 E. DEERE
SANTA ANA, CA**

For more information, please contact:



TIM WALKER
office: 949.724.4741
timwalker@lee-associates.com
DRE #: 01218076



HAYDEN TOLAND
cell: 310.903.7821
htoland@lee-associates.com
DRE #: 02215762



MILES TOLAND
cell: 310.903.7806
Mtoland@lee-associates.com
DRE #: 02216740

Visit

www.1820deere.com

LEE & ASSOCIATES
COMMERCIAL REAL ESTATE SERVICES
NEWPORT BEACH

The information contained herein has been obtained from the property owner or other third party and is provided to you without verification as to accuracy. We (Lee & Associates, its brokers, employees, agents, principals, officers, directors and affiliates) make no warranty or representation regarding the information, property, or transaction. You and your attorneys, advisors and consultants should conduct your own investigation of the property and transaction.

±8,094 RSF FOR LEASE

FREESTANDING OFFICE/LAB BUILDING

SITE PLAN



**1820 E. DEERE
SANTA ANA, CA**

For more information, please contact:



TIM WALKER
office: 949.724.4741
timwalker@lee-associates.com
DRE #: 01218076



HAYDEN TOLAND
cell: 310.903.7821
htoland@lee-associates.com
DRE #: 02215762



MILES TOLAND
cell: 310.903.7806
Mtoland@lee-associates.com
DRE #: 02216740

Visit

www.1820deere.com

LEE & ASSOCIATES
COMMERCIAL REAL ESTATE SERVICES
NEWPORT BEACH

The information contained herein has been obtained from the property owner or other third party and is provided to you without verification as to accuracy. We (Lee & Associates, its brokers, employees, agents, principals, officers, directors and affiliates) make no warranty or representation regarding the information, property, or transaction. You and your attorneys, advisors and consultants should conduct your own investigation of the property and transaction.

±8,094 RSF FOR LEASE

FREESTANDING OFFICE/LAB BUILDING



AVAILABLE PROPERTIES

BLDG	SF	RATE/PSF	COMMENTS
1820	±8,094	TBD	Creative office/lab (tenant improvements to suite)



For more information, please contact:



TIM WALKER
office: 949.724.4741
timwalker@lee-associates.com
DRE #: 01218076



HAYDEN TOLAND
cell: 310.903.7821
htoland@lee-associates.com
DRE #: 02215762



MILES TOLAND
cell: 310.903.7806
Mtoland@lee-associates.com
DRE #: 02216740

1820 E. DEERE
SANTA ANA, CA

Visit

www.1820deere.com



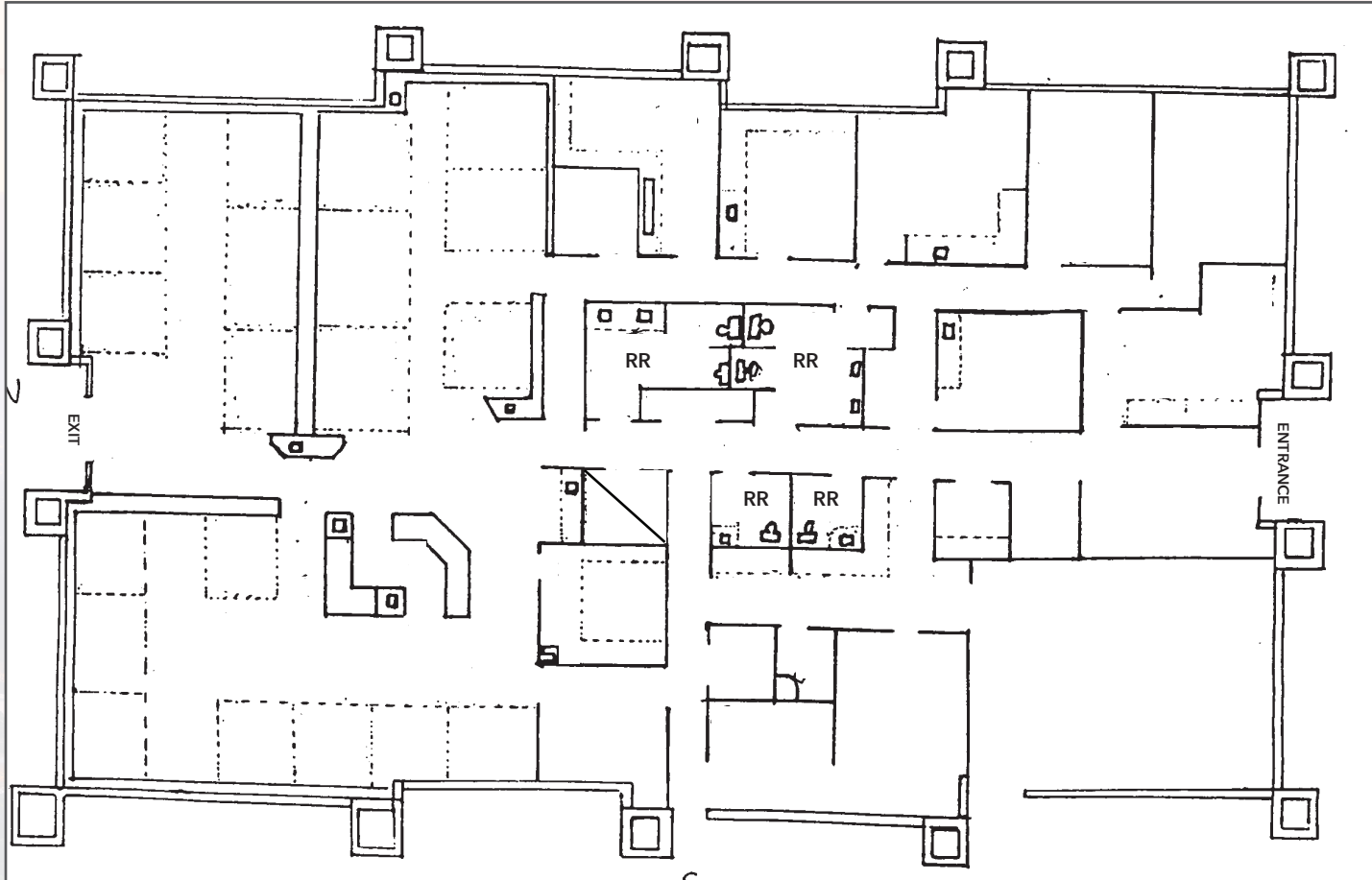
The information contained herein has been obtained from the property owner or other third party and is provided to you without verification as to accuracy. We (Lee & Associates, its brokers, employees, agents, principals, officers, directors and affiliates) make no warranty or representation regarding the information, property, or transaction. You and your attorneys, advisors and consultants should conduct your own investigation of the property and transaction.

±8,094 RSF FOR LEASE

FREESTANDING OFFICE/LAB BUILDING

SITE PLAN

1820 E DEERE
±8,094 RSF



For more information, please contact:



TIM WALKER
office: 949.724.4741
timwalker@lee-associates.com
DRE #: 01218076



HAYDEN TOLAND
cell: 310.903.7821
htoland@lee-associates.com
DRE #: 02215762



MILES TOLAND
cell: 310.903.7806
Mtoland@lee-associates.com
DRE #: 02216740

Visit

www.1820deere.com

1820 E. DEERE
SANTA ANA, CA

LEE & ASSOCIATES
COMMERCIAL REAL ESTATE SERVICES
NEWPORT BEACH

The information contained herein has been obtained from the property owner or other third party and is provided to you without verification as to accuracy. We (Lee & Associates, its brokers, employees, agents, principals, officers, directors and affiliates) make no warranty or representation regarding the information, property, or transaction. You and your attorneys, advisors and consultants should conduct your own investigation of the property and transaction.

±8,094 RSF FOR LEASE

FREESTANDING OFFICE/LAB BUILDING



SANTA ANA

Santa Ana is downtown for the world famous Orange County, California. It is the County Seat, the second-most populous city in Orange County, and is home to a vibrant evening scene and arts community. Over 1,400 City employees work hard every day to deliver efficient public services in partnership with our community to ensure public safety, a prosperous economic environment, opportunities for our youth, and a high quality of life for residents.

The City of Santa Ana is a 27-square mile, ethnically diverse city located 35 miles south of Los Angeles and roughly ten miles inland from the Pacific Ocean. With a total population of over 310,000, Santa Ana is Orange County's second largest city and serves as the county seat. The City comprises more than 60 distinct neighborhoods. The Santa Ana Unified School District is the local school district that serves the majority of our community. Additionally, there are six neighboring school districts that serve portions of the city, including Garden Grove, Tustin, Orange, Irvine, Newport-Mesa, and Huntington Beach Unified School Districts.



**1820 E. DEERE
SANTA ANA, CA**

For more information, please contact:



TIM WALKER
office: 949.724.4741
timwalker@lee-associates.com
DRE #: 01218076



HAYDEN TOLAND
cell: 310.903.7821
htoland@lee-associates.com
DRE #: 02215762



MILES TOLAND
cell: 310.903.7806
Mtoland@lee-associates.com
DRE #: 02216740

Visit

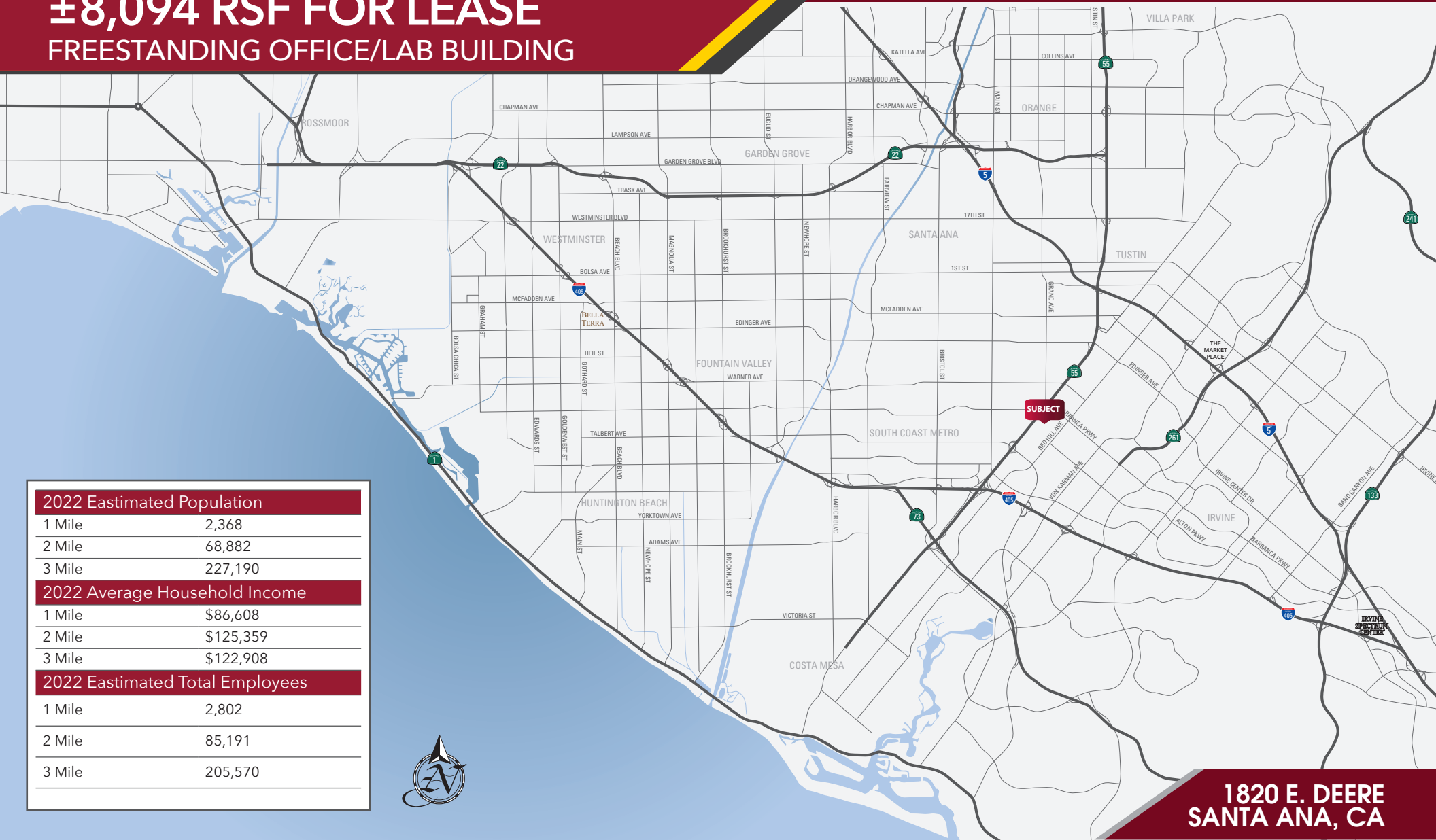
www.1820deere.com



The information contained herein has been obtained from the property owner or other third party and is provided to you without verification as to accuracy. We (Lee & Associates, its brokers, employees, agents, principals, officers, directors and affiliates) make no warranty or representation regarding the information, property, or transaction. You and your attorneys, advisors and consultants should conduct your own investigation of the property and transaction.

±8,094 RSF FOR LEASE

FREESTANDING OFFICE/LAB BUILDING



2022 Eastimated Population

1 Mile	2,368
2 Mile	68,882
3 Mile	227,190

2022 Average Household Income

1 Mile	\$86,608
2 Mile	\$125,359
3 Mile	\$122,908

2022 Eastimated Total Employees

1 Mile	2,802
2 Mile	85,191
3 Mile	205,570



**1820 E. DEERE
SANTA ANA, CA**

For more information, please contact:



TIM WALKER
office: 949.724.4741
timwalker@lee-associates.com
DRE #: 01218076



HAYDEN TOLAND
cell: 310.903.7821
htoland@lee-associates.com
DRE #: 02215762



MILES TOLAND
cell: 310.903.7806
Mtoland@lee-associates.com
DRE #: 02216740

Visit
www.reynolds-bp.com



The information contained herein has been obtained from the property owner or other third party and is provided to you without verification as to accuracy. We (Lee & Associates, its brokers, employees, agents, principals, officers, directors and affiliates) make no warranty or representation regarding the information, property, or transaction. You and your attorneys, advisors and consultants should conduct your own investigation of the property and transaction.