

**1800
ORD
WAY**

+/- 5,700 SF INDUSTRIAL WAREHOUSE

OCEANSIDE, CALIFORNIA

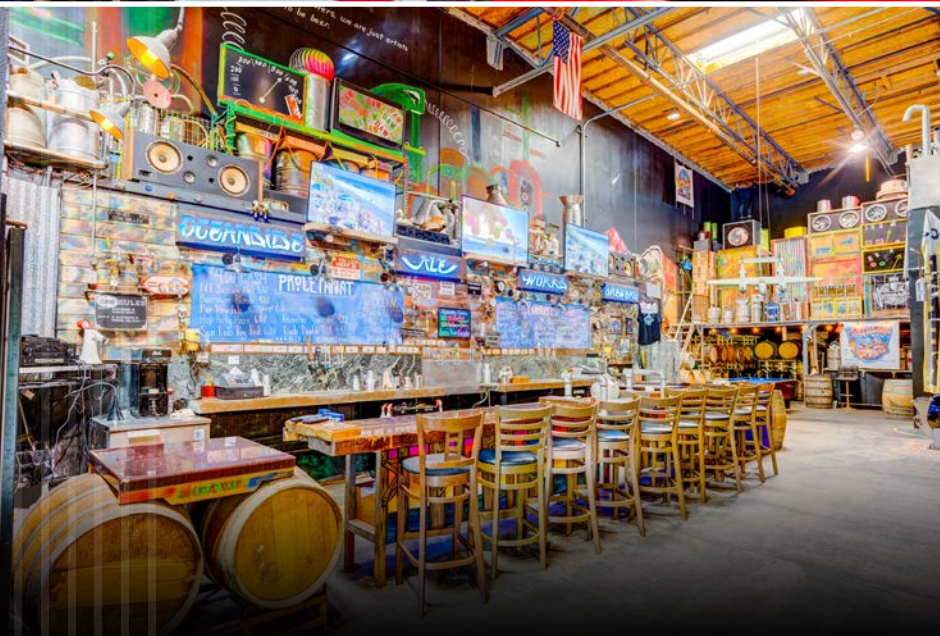
FOR SALE



LEE & ASSOCIATES
COMMERCIAL REAL ESTATE SERVICES

**GRADE-LEVEL LOADING | 22' WAREHOUSE CLEAR-HEIGHT
PAVED OUTDOOR YARD | MINIMAL OFFICE | BONUS MEZZANINE**

+/- 5,700 SF INDUSTRIAL WAREHOUSE



1800 ORD WAY OCEANSIDE, CA

- ◇ +/-5,700 SF INDUSTRIAL WAREHOUSE
- ◇ GRADE-LEVEL LOADING DOOR
- ◇ 22' CLEAR-HEIGHT
- ◇ CURRENTLY BUILT-OUT FOR BREWERY / TAPROOM
- ◇ TWO LARGE COOLERS/BEER FRIGDES
- ◇ PAVED YARD / OUTDOOR LOUNGE
- ◇ KITCHENETTE
- ◇ 2ND FLOOR OFFICE SPACE
- ◇ TWO SKYLIGHTS
- ◇ THREE RESTROOMS
- ◇ ABUNDANT PARKING
- ◇ MICROBREWERY AND ALL EQUIPMENT ALSO AVAILABLE FOR PURCHASE, PLEASE CONTACT BROKER FOR DETAILS

CONTACT BROKER FOR PRICING



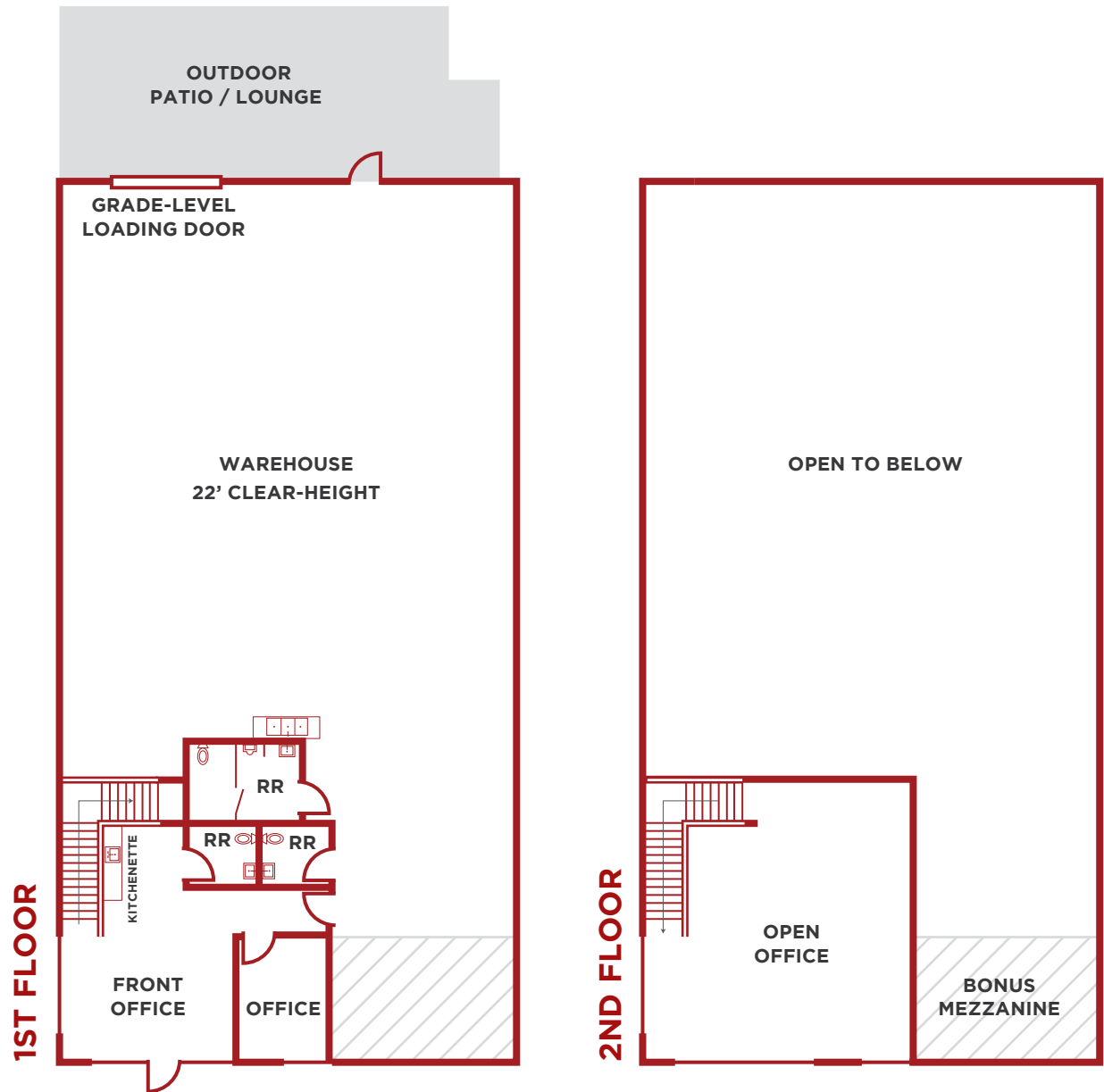
CONCEPTUAL RENDERING
WITH WAREHOUSE DELIVERED VACANT



THE INTERIOR



THE EXTERIOR



Floorplan not to scale, for reference only.

CONCEPTUAL OPEN FLOORPLAN

4,506
DAYTIME EMPLOYEES
WITHIN ONE MILE

6,705
CARS PER DAY
NORTH AVENUE/
ORD WAY

17,937
RESIDENTS
WITHIN ONE MILE

UNDER CONSTRUCTION
80,000 SF INDUSTRIAL BUILDING

OCEANSIDE MARKETPLACE
MAAN'S MEDITERRANEAN GRILL

QUIGLEY FINE WINES

OCEAN FRESH FISH

1800
ORD
WAY

ALDI
JACK IN THE BOX
DAVE'S HOT CHICKEN
CASERA LATIN KITCHEN

ENZO'S BBQ ALE HOUSE
MCDONALD'S
88 RANCH MARKET
THAI THAI OCEANSIDE
JERSEY MIKE'S
PANDA EXPRESS

ALBERTSONS
STARBUCKS
PLANET FITNESS
SAIGON SOUP
POKI POKI
TACO BELL

23,790
CARS PER DAY
OCEANSIDE BLVD/
ORD WAY

TITLEIST PERFORMANCE INSTITUTE
SOCAL SPORTS COMPLEX

BELCHING BEAVER BREWERY

NORTH AVENUE

ORD WAY

OCEANSIDE BLVD.



HIGH-PROFILE RESIDENTIAL & RETAIL CORRIDOR | AN ABUNDANCE OF RETAIL & RESTAURANT AMENITIES WITHIN A 2-MILE RADIUS

VISITOCOASTSIDE.ORG

OCEANSIDE

THE ORIGINAL SoCAL BEACH TOWN

Located at the northernmost end of San Diego's coastline, Oceanside is home to some of Southern California's widest beaches, historical landmarks and a distinct Southern California surf culture. It's where wide sandy beaches and historical landmarks come with a side of street art and world-class culinary talent. Where you can whale watch, people watch (oh, the people watching), hit the links, cruise the coastal rail trail, or just soak up the laid-back classic cool, local brew in hand.



VISIT
OCEANSIDE
WEBSITE



OCEANSIDE
VISITORS
GUIDE



OCEANSIDE
MAPS &
GUIDES

Long stereotyped as a military town for its proximity to the Camp Pendleton Marine Corps Reserve, Oceanside has matured into a thriving community and a popular beach destination in its own right. A recent culinary boom has put it on the map as a dining destination as the town is filled with colorful eateries, brew pubs, patios for post-surfing happy hours, and is one of North County San Diego's best places to escape the hustle and bustle of the crowded cities.





1800 ORD WAY

OCEANSIDE, CALIFORNIA

For more information or tour, please contact:

BRIAN KOENIG
Associate

† 858.247.2941
bkoenig@lee-associates.com
CA RE Lic. #02128126

BRENT BOHLKEN
Senior Vice President / Principal

† 858.395.8053
bbohlken@lee-associates.com
CA RE Lic. #01022607

 **LEE &
ASSOCIATES**
COMMERCIAL REAL ESTATE SERVICES

Lee & Associates San Diego
6310 Greenwich Drive, Suite 240
San Diego, CA 92122

www.lee-associates.com/sandiego

All information furnished regarding property for sale, rental or financing is from sources deemed reliable, but no warranty or representation is made to the accuracy thereof and same is submitted subject to error, omissions, change of price, rental or other conditions prior to sale, lease or financing or withdrawal without notice. No liability of any kind is to be imposed on the broker herein. Information Sources: Costar (costar.com), Visit Oceanside (visit oceanside.org), Visit San Diego (sandiego.org)